



Educational Workshops

Women's Brain Foundation - Introduction



Women's Brain Project was founded in 2017 and based in Switzerland, and is composed of experts in medicine, neuroscience, psychology, pharmacy and policy and communications who WORK TOGETHER with patients and their relatives, healthcare professionals, policymakers and other stakeholders.

The ASSOCIATION transformed into a FOUNDATION in 2024 to operate the Research Institute for Sex and Gender Precision Medicine



36+

5 Core Team,
30+ associated professionals



150,000+

Social Media followers



40+

Collaborations with groups
around the world



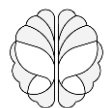
20+

Awards



120+

Scientific / Policy
Publications & Books



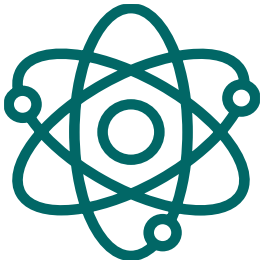
Women's Brain Foundation - Introduction



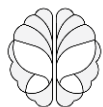
Women's Brain Foundation – Our Offering

Our experienced and multidisciplinary team of scientists, doctors, psychologists, and many more offers workshops to scientific and non-scientific audiences, tailored to your specific needs.

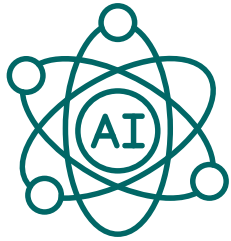
Our core topics cover the following areas:



- Sex and gender precision medicine (What is it? Why is it needed?)
- Precision medicine in brain and mental health: a scientific and policy perspective
- Sex and gender differences in cognitive functioning and prevention measures
- Sex and gender differences in case studies of Migraine, Alzheimer's Disease, Mood Disorders (e.g. depression), Traumatic Brain Injury, Anxiety Disorders, Multiple Sclerosis etc
- Sex differences in the immune system and implications for disease
- Sex and gender considerations in clinical trials
- Sex and gender biases in digital technologies and Artificial Intelligence
- Sex and gender difference in longevity; a scientific and policy perspective



Women's Brain Foundation – Our Offering



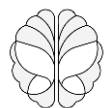
Novel technologies and ethics:

- Design of digital health interventions
- Digital biomarkers
- Ethical considerations in novel technologies for health solutions
- Sex and differences in AI and technology

Mental health and general wellbeing:



- Risk reduction related to both mental disorders and neurological diseases that can be implemented in daily life
- Findings from recent studies and peer-reviewed papers and their relevance for daily life
- Co-creation of a tangible mental health action plan for your organization
- Gender stereotypes and health
- Perinatal mental health



Women's Brain Foundation – Our Offering

Policy and advocacy:

Responding to the policy agenda:

- Responding to the policy agenda; directly intervening/lobbying (responding to policy/regulatory developments) at global (UN, WHO, OECD, WEF), EU and national levels on brain and mental health
- Landscape analysis (stakeholder mapping, policy auditing, outreach plans) across neurological conditions
- Policy-led communications raising awareness to create a more favourable policy environment for precision medicine and care



Engaging proactively:

- Rolling out strategic flagship initiatives in different neurological conditions
- Building the knowledge base (e.g. through independent fact-based reports, health economic research, exchange of best practices)
- Coalition building by establishing multistakeholder platforms
- Policy/regulatory roundtables
- Branded campaigns in different neurological conditions

Women's Brain Foundation – Our Offering

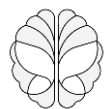
We offer sessions in several formats including:

- 1 hour talk
- 2 hours interactive talk
- 3 hours roundtable

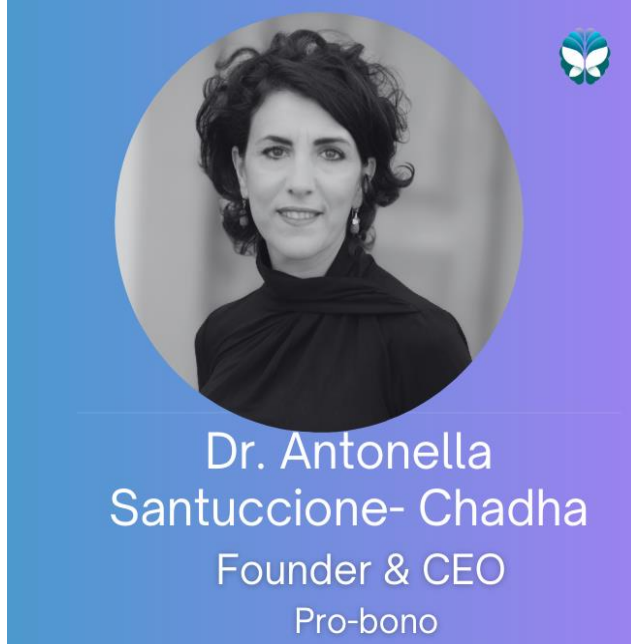
Each session is unique and can be tailored according to your preferences and individual needs.

Our fees include:

- Co-created agenda for the session
- All training materials



Women's Brain Foundation – Our Team



Dr. Chadha is a highly accomplished medical doctor and internationally recognized expert in neuroscience, neurological disorders, and psychiatric diseases. She co-founded and serves as the pro-bono CEO of the Women's Brain Foundation and holds the position of Vice-President at Euresearch. Known as a transformative global leader and team builder, she has successfully revitalized start-ups and provided strategic counsel to CEOs of start-ups, boards of directors, and junior colleagues. She has worked as a regulator for the Swiss Agency for Therapeutic Products and held executive roles at Roche Diagnostic, Roche Pharmaceutical, and Biogen. Additionally, she has served as the Chief Medical Officer and ad-interim CEO at Altoida.

Dr. Chadha has always been focused on solving the puzzles related to Alzheimer's and other psychiatric diseases. She conducted research on immunotherapies for neurodegenerative disorders at the University of Zurich, where the first disease-modifying treatment for Alzheimer's was developed. In her earlier years, she collaborated with multiple European universities and the EU Commission Directorate for Health and Food Safety.

Dr. Chadha has received numerous accolades for her accomplishments. She has consistently been listed among the Top 100 Women in Business in Switzerland since 2018 and was elected Woman of the Year in Switzerland in 2019. She has also been honored with the World Sustainability Award for her contributions to advancing Precision Medicine and the "Premio Medicina Italia" for her efforts in managing the pandemic. In 2021, she was nominated among the top 10 women for innovation in Switzerland. In 2022, she received the Veuve Clicquot Bold Woman Award in Switzerland, followed by the "Dean Martin" International Prize in 2023.

Dr. Chadha is passionate about eliminating bias in the development of solutions for mental and neurological diseases, with the aim of achieving precision medicine. She advocates for the establishment of the first worldwide sex and gender precision medicine research institute, based in Switzerland.

Beyond her professional achievements, Dr. Chadha is an author of scientific publications, TEDx talks, and books such as "Sex and Gender Differences in Alzheimer's Disease" and "Una Bambina Senza Testa."

Women's Brain Foundation – Our Team

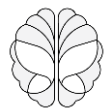


Dr. Mariapaola Barbato
Scientific Lead
Pro-bono

Dr. Barbato is a cognitive scientist with over 15 years of research experience. After obtaining her PhD from Sapienza University of Rome, she worked as postdoctoral fellow at the prestigious Hotchkiss Brain Institute (Calgary, AB, Canada), and later as Assistant Professor at Zayed University (Dubai, UAE).

Over the years and using a variety of methodologies, her work has focused on exploring the link between cognitive function and mental health in both healthy and clinical populations. She has published several peer-reviewed scientific articles and has taken part in numerous international conferences.

Currently, Dr. Barbato lives in Zürich, Switzerland, where she joined the WBF team while she also continues collaborating on numerous research projects with her colleagues around the world.



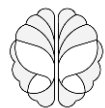
Women's Brain Foundation – Our Team



Dr. Beatriz Guzman
Scientific Medical Affairs
Pro-bono

Dr. Guzman has a PhD in Biomedical Sciences with a specialization in neuropharmacology. With over thirteen years of experience in translational science and drug development across academia, CRO, and biotech, focusing on neurodegenerative diseases such as Alzheimer's and Parkinson's, her expertise lies in bench-to-bedside, strategy in early clinical phases and scientific communication.

She is a self-driven and goal-oriented professional who is passionate about bringing preventive and precision medicine to people, with a focus on molecular diagnosis, lifestyle and digital health innovations.



Women's Brain Foundation – Ongoing Projects

PRE-CLINICAL, CLINICAL RESEARCH & RWE

1. Sex differences in Alzheimer's disease (AD) modifying treatments
2. Organoids for brain disorders: the role of biological sex differences
3. Impact of gender on the willingness to participate in clinical trials
4. Sex differences in digital & fluid biomarkers for AD
5. Proportion of enrolled females and efficacy in AD clinical trials

nature THE LANCET

REGULATORY FRAMEWORKS & CLINICAL PRACTICE

1. The female / male AD patient journey + follow-up
2. The sex and gender specific patient surveys (AD & Multiple Sclerosis (MS))
3. Regulatory roundtables on sex and gender precision medicine
4. Educational series on sex and gender differences in **clinical practice**

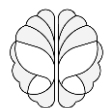
RESEARCH POLICY & ADVOCACY

1. Societal-economic impact of AD, MD and migraine under sex and gender lens
2. Enhancing care for people with Parkinson's disease
3. High-level engagement on brain and mental health at WEF, Davos, 2025
4. Responding to the policy agenda (government, UN, WHO, NIH etc.) to drive change in brain health

NOVEL TECHNOLOGIES & AI

1. Brain App for AD - in discussion with Roche Dx
2. Adding sex and gender characteristics in virtual reality cognitive aid for AD patients with Senopi®
3. Use of Generative AI to resolve biases in organization and initiatives with MindgenWBF®
4. Impact of abortion / miscarriage on mental health based on social behaviour

The Fourth International Forum on Women's Brain & Mental Health 2025



RESEARCH INSTITUTE
FOR SEX AND GENDER
PRECISION MEDICINE

Ongoing Partners

PRE-CLINICAL, CLINICAL RESEARCH & RWE

Research Projects, Papers & Grants



REGULATORY FRAMEWORKS & CLINICAL PRACTICE

Research Projects, Workshops, Education



RESEARCH POLICY & ADVOCACY

Policy & Advocacy



NOVEL TECHNOLOGIES & AI

Research Projects, Education Awareness, Technology Tools



If you are interested,
please contact us today!



info@womensbrainproject.com

www.womensbrainproject.com



Disclaimer

This document contains confidential and/or proprietary information of Women's Brain Foundation. This document and any information contained herein must not be used, shared, distributed, copied, in full or in part, without prior written consent from Women's Brain Foundation.

